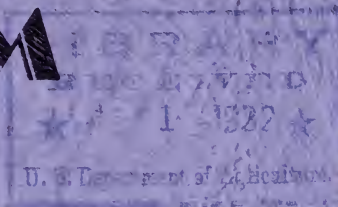


Historic, Archive Document

Do not assume content reflects current scientific knowledge, policies, or practices.

62.41

SPRINGHILL FARM



DAHLIAS - GLADIOLUS
PERENNIAL PLANTS
PEONIES - IRIS

1932

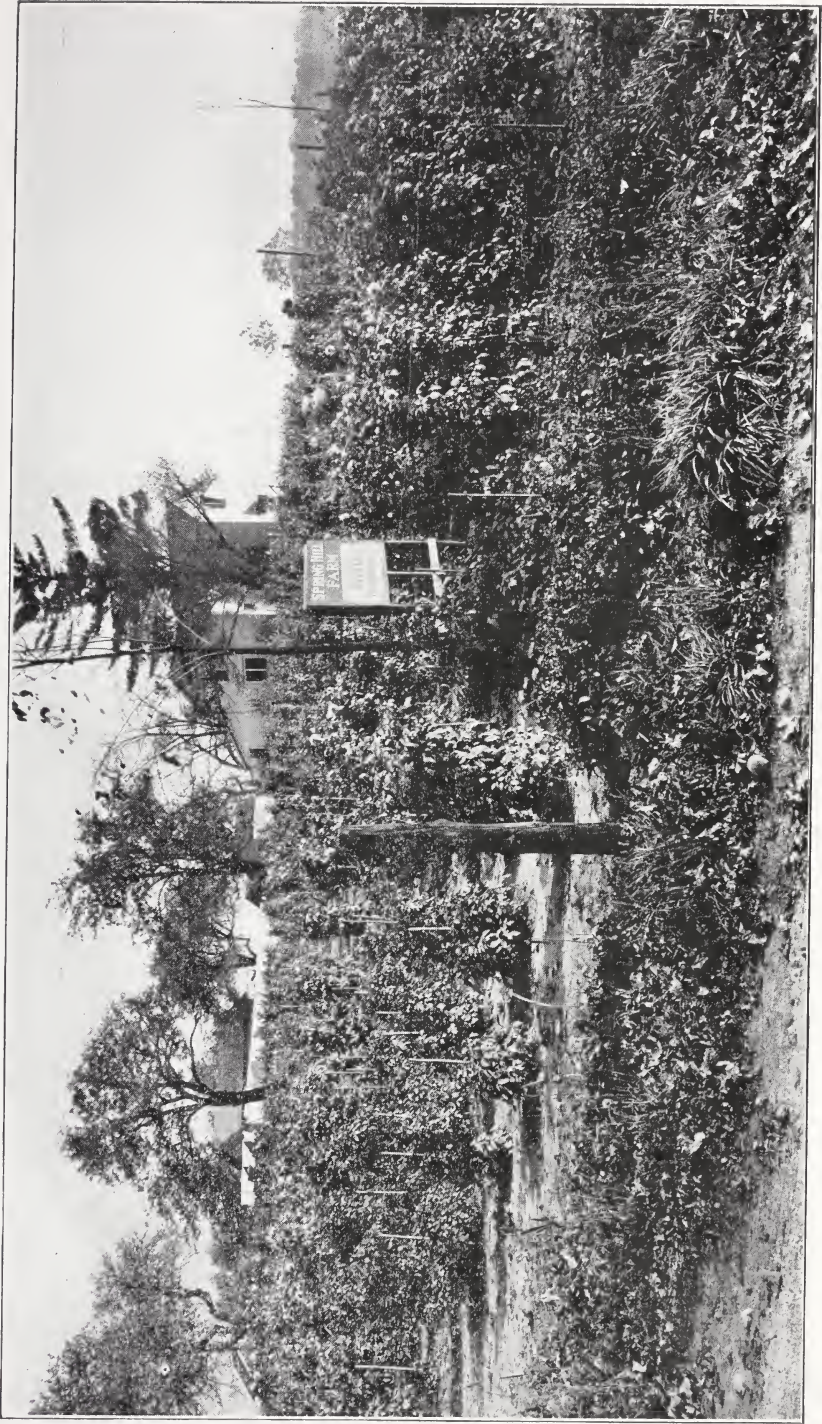
A. T. EDISON

R. F. D. No. 2

Phone 7-8212

Grand Rapids, Michigan

VISITORS WELCOME



A Section of the Show Garden in Bloom

INSTRUCTIONS—INFORMATION

To those who are unacquainted with the different classes and varieties of Dahlias I would suggest that such leave the selection to me. Send me the amount of money you wish to invest and in return I will send you those that will surely delight. Also my liberal filling of the order will more than be satisfactory.

ORDER EARLY—As orders are filled in rotation—with field-grown roots only—ordering early will insure the reservation of varieties that later may be sold out.

SUBSTITUTION—Orders are filled with varieties called for, and unless substitution is asked, I never substitute.

TIME OF SHIPMENT—Unless otherwise ordered, tubers will be shipped between April 15th and May 15th, by express or insured mail at my expense, on all orders of over \$2.00; under \$2.00 add 15c for postage.

TERMS—Cash with order unless parties are known to me. No goods sent C. O. D. unless 50 per cent of purchase price accompanies order.

GUARANTEE—I guarantee safe delivery. I guarantee all bulbs to grow and to be true to name, and will cheerfully replace any that fail in either respect when not planted too early in wet or soggy ground causing tuber to rot. Not responsible for more than the purchase price of any tuber

REMITTANCES should be made by bank draft, postoffice money order or registered letter. Postage stamps accepted up to \$2.00. Coin should not be sent by letter unless registered.

ERRORS—While my system for handling orders is as near perfect as possible, yet in the rush of business, errors are possible to occur, and I wish to be promptly notified of such and will at once make same satisfactory. Make all complaints to me, not to your friends, as we aim to please you.

NAME AND ADDRESS—Remember to write your NAME, POST-OFFICE, COUNTY and STATE, also give STREET NUMBER or P. O. BOX as plainly as possible.

REFERENCE—Any bank in Grand Rapids, Mich.

400 Varieties Dahlias 100 Varieties Gladiolus 25 Varieties Narcissi
40 Varieties Tulips 20 Varieties Perennial Phlox 200 Varieties Peonies
100 Varieties of Iris

An extra tuber given with all orders. Value 10 per cent of your order.

SEE LAST PAGE FOR DAHLIA COLLECTIONS

Odds and Ends Dahlia Collection, 10 for \$1.50

CULTURAL DIRECTIONS

Dahlias are easily grown, requiring no special soil, treatment or skill to bring them to perfection.

They are really an Autumn flower and should not be planted too early.

They are remarkably free from disease and have few special enemies.

Plant in sunny situation, although they will do nicely in partial shade.

Prepare the soil by deep spading; if soil is sandy a shovel full of well rotted manure may be incorporated with it; if otherwise use little, if any, fertilizer before plants begin to bud. Add sand or coal ashes to heavy soil.

Drive a stake in each hole to support the plant. Lay tuber down flat with eye upward and next to stake, about five inches deep, and cover two inches with pulverized soil, gradually filling to level as plant progresses.

As soon as plants are large enough, pinch out the top just above the second or third set of leaves; this causes the plant to branch. If tall plants are wanted cut off all but one stalk and keep tied up to stake.

Cultivate well until buds appear, then stop all cultivation except light raking after rain or watering, just enough to break the crust of ground; only be sure and do this.

When buds appear, spread manure or some fertilizer around plant and rake lightly into soil.

Sometimes a perfectly good tuber with a good eye will refuse to sprout. In such cases, dig up the tuber and soak for 24 hours in fresh water, this usually will cause it to sprout in a reasonable time after replanting.

Unless weather is very dry and hot, do not begin watering until buds appear, then soak the ground thoroughly (not sprinkle) about once a week or ten days. Cut off all faded flowers with as much of the stalk as you can.

For extra large blooms disbud by pinching off all the buds in a cluster except the strongest one.

If bothered by cut worms or slugs, cut a piece of tarred paper 3 inches wide by 10 or 12 inches long, form collar and place around plant, 1 inch below and 2 inches above the ground.

For cut flowers pick in the evening or early morning if possible; burn the ends of stems in any flame, or dip in boiling water for 10 seconds; after either treatment place in cold water and put in cool place free from draft until wanted.

When frozen down in Autumn, cut stalks off at the ground and dig carefully so as not to break neck of tuber, for the eyes for next season's growth are only found where the tuber joins the stalk. Store same as potatoes where they will not freeze, shrivel or rot. Turn the clump upside down to drain out any moisture that may start decaying and when dried about two weeks I have the best success packing them upside down in wooden boxes with a sheet of paper over top.

To restore wilted blooms, dissolve a tablet of Aspirin in warm water, and place flowers therein. This will freshen some varieties but not all of them.

I am always pleased to answer any questions regarding Dahlia culture.

FORMAL DECORATIVE DAHLIAS

Fully double flowers, with the margins of the floral rays slightly or not at all revolute, floral rays generally broad, either pointed or rounded at tips, with outer floral rays tending to recurve and central floral rays tending to be cupped; all floral rays in a somewhat regular arrangement. For example, Sagamore, Jersey Beauty, Regal, Glory of Monmouth, Trentonian, Mrs. I. de Ver Warner and Judge Marean.

- | | Price |
|--|--------|
| Andy Gump (Willmore) —One of the best bright reds. Very attractive flower held on very strong stems, 16 to 18 inches long | \$0.75 |
| Aurora B. —Dark purple with small colorette like petals intermingled | \$0.50 |
| Avalon —Pure clear yellow, the large flowers are very distinct and pleasing in shape, always full to the center, and produced in great abundance on strong stems. This is a flower with every good quality. A remarkably good keeper when cut; in fact, I regard it as the best yellow decorative for cutting | \$0.50 |
| Bashful Giant —Fine exhibition flower. Very large apricot, shaded gold | \$0.50 |
| Blue Jay —Medium sized perfect flouwer of violet blue on long stiff stems..... | \$0.50 |
| Brockton Beauty (Carver) —This is the most beautiful and largest lavender flower we have ever seen. Light lavender flecked with purple in centre. One of the few lavenders that does not appear washed out or faded. Most excellent for beauty and vigor. Medium height | \$3.00 |
| Camarillo —Deep lavender with extra long wide petals, outer petals fold to reverse. Has small open center. Fine flower on long stiff stems | \$0.50 |
| Casper G. Ware —Bright silvery violet rose, nearly pink, late in season. Prolific bloomer. Always full to center, good stems..... | \$0.75 |
| Champagne —Dull golden bronze or champagne, varying to chamois, fine and large, good stems and strong plants | \$0.50 |
| Chehalem (D.) —An unusually beautiful shade of glowing creamy pink shading to cream at center. Blooms are large and stems are strong and upright. Plants grow tall and are profuse bloomers. A splendid cut flower as blooms keep well. Won certificate of merit in Northwest Trial Garden, 1928 | \$1.50 |
| Clansman (Diggle) —Bronze or English red self color. Early and continuous bloomer of medium height | \$0.75 |
| Clarise —Fine old rose color. Good size, prolific, and grows tall..... | \$0.50 |
| Dr. M. A. Howe —A beauty in color and form, magnificent and large of light pink, a nine-inch flower and fine for exhibition..... | \$0.50 |
| Earl Williams —Brilliant red crimson with white, well distributed in each petal, stands erect on long stiff stems, and a prize winner.... | \$0.60 |
| Eastern Star —Golden yellow with a little bronze suffusion. Large thick flower on stiff stems | \$0.75 |
| El Camino Real — Decorative — A gorgeous variety Spanish crimson. The large and full flowers above the heavy growth of dark green foliage give it an appearance of truly regal beauty. There has always been a heavy demand for this variety..... | \$0.50 |
| Elite Glory (Kennedy) —Giant rich red without other shadings. Full to the center and held on good stiff stems. Holds good when cut...\$ | \$1.00 |
| Eliza Clark Bull (Boston) —One of the finest pure white decoratives, large and held on long stiff stems | \$1.25 |
| Ellinor Vandever (Seal) —An incomparable dahlia of exquisite beauty and great size, having every desirable quality. The large blossoms are of a glowing, satiny, rose-pink. The flowers are of great depth and substance, and are held far above a tall sturdy bush on exceptionally long, stiff stems. Early bloomer. Highly recommended, doing especially well in the East..... | \$0.50 |

	Price		Price
Elvira —Deep golden yellow shaded cream at the base of the petals. Fine open flower with long narrow waved petals. Stiff stems.....	\$0.50	Fordhook Model (Burpee) —Another outstanding new Burpee variety. A lovely shade of silvery lilac with an iridescent sheen of pink. The flowers grow to enormous size and wonderful shape.....	\$0.75
Embassador —Deep red or maroon with blooms of medium size on long stiff stems.....	\$0.75	Fordhook Victory —Giant flowers, well formed, and carried on strong sturdy stems. The color is a rich shade of tryrian-rose. The petals aer well placed and of substantial texture.....	\$1.25
Encore —Color, delicate pink, faintly tinged with lavender shadings toward the outer margin of the petals. A seedling of Mrs. Carl Salbach and a fine keeper.....	\$1.00	Frau Angelo —Very fine flower of bright lavender pink. Long wiry stems, good cut flower.....	\$0.50
Faith Garibaldi (Boston) —Deep rose colored flower shading lighter on outer petals. Good deep full centered flower of large size, held on long, straight stiff stems.....	\$1.00	Frank Miller (Burch) —Formal Decorative. An especially fine new dahlia of large size, carried on unbelievably long strong, erect stems. The originator says they grow like corn stalks. This variety has been a great prize-winner ever since its introduction and has done beautifully in our garden.....	\$5.00
Frau Seth Schief —Bright lively chamois color slightly suffused orange, extra large flowewrw on perfect stems, 8-10 inch blooms.....	\$0.50	F. T. D. (F. & M.) —This dahlia is a seedling of Trentonian. Color is a Tyrian rose, tall grower, free bloomer held on long stiff stems.....	\$1.00
Fordhook Charm (Burpee) —Truly a charming flower of a distinct shade of coral-red suffused with bronze and shaded with a suspension of yellow. The reverse of the petals shows an old rost cast. 65c each; 12 for.....	\$6.45	Gloria Palis (New) —Light creamy yellow tipped with light lavender purple. Medium size, thick and full to center. Petals long, outer ones slightly waved. Good stiff stems.....	\$0.60
Fordhook Empress —This is a great favorite. All who have seen it have admired its exquisite color and artistic formation of its petals. The color is a glowing tone of rich salmon orange, shading to peach red and old gold.....	\$2.00	Glory of Monmouth (Kemp) —A large beautiful flower of Eosine pink, shading to strawberry pink at center of petals. Base of petals a light orange; a new combination in dahlias. Plant is of medium height, wide spreading and sturdy, holding the exquisite blooms well above the foliage on strong stems. Very free flowering and an extra fine keeper. Should not be pinched back.....	\$1.00
Fordhook Goldcrest —A beautiful new Dahlia with magnificent salmon-pink blooms, toned with bright red and a deeper salmon reverse. The center of the blooms shades to rich yellow. Broad, well rounded petals. Certificate of Merit, Dahlia Society of California.....	\$1.75	Golden Dream (Reed) —High score A. D. S. trial garden, 1926. Certificated by the Dahlia Society of New Jersey, also winning first prize everywhere it has been exhibited. Color Storutian yellow and a golden sheen or lustre, reverse Brazil red. Long stiff stems. It surely is a Golden Dream.....	\$2.00
Fordhook Goldilocks (Burpee) —Rich old gold, the ends of each petal tipped white. Very few flowers come in solid gold color. Of good size and heavy, being held on long stiff stems.....	\$1.75	Grenadiere (Boston) —Large and perfect. Color purplish maroon with reverse of silver, good stiff stems and strong grower.....	\$0.75
Fordhook Marvel —A lovely shade of peach red shading to a strawberry pink overcast with a sparkling salmon orange sheen. Large blooms held on long stiff stems.....	\$2.00		

- | | Price | | Price |
|--|--------|---|--------|
| Halvella —Large thick, beautiful flowers of mallow pink with golden sheen, shaded darker to the center | \$0.75 | reverse. Flower is perfect, attaining great size and depth. A good keeper, does not burn. Held on long stiff stems above the foliage and great prize winner..... | \$3.00 |
| Harry Mayer (Seltsam) — Superb large thick flowers of pale rosaline purple. A splendid grower with excellent stems and foliage..... | \$1.50 | Kitty Dunlap — Bright old rose, large and with long stems, good exhibition flower | \$0.50 |
| HELEVN IVENS (F. & M.) —An informal decorative of orchid-lavender. It begins to bloom early and holds its color throughout the season. Blooms very freely, has good stems and tough leathery foliage. Another Roll of Honor Dahlia that is giving great satisfaction | \$4.00 | Kitty Rogers (English Deco.) A dahlia of immense size, the petals not being numerous but large, broad and rounded, making up completely circular flowers. Color soft tint of pink on white ground. Well erect on stiff stems and a good addition to any collection.... | \$1.00 |
| Ida Perkins (Perkins) — A large white with a cream centre. Medium height | \$1.50 | La Gros Bete —Large grand rosy red, one of the finest of its color and with good stems..... | \$0.50 |
| Jersey's Beacon (Waite) —An exhibition flower, it has few equals in its color. The color is Chinese scarlet, with a paler reverse, giving it a two-toned effect. The flowers are large and globular in shape; it is a vigorous grower and has splendid insect resisting foliage | \$0.75 | Mabel Goodacre (Goodacre) —One of the finest dahlias yet produced. A beautiful rose pink or light mallow purple of delicate and dainty coloring. Field grown flowers as large as 12 inches. A vigorous low growing plant with perfect stems and foliage. A profuse bloomer | \$2.50 |
| Jersey's Beauty (Waite) — Large true pink and old gold blending with salmon. The beautiful flowers are held aloft on rigid stems, won many prizes..... | \$0.50 | Madiladja —A beautiful rose pink with large long wide petals with fine tips. Flowers held on extra long stiff stems..... | \$0.40 |
| Jersey's Jewel (Waite) —One of the finest exhibition Dahlias. The color is a soft mellow pink; the flowers are large and long petaled. The stems are perfect in every way | \$0.75 | Marshal Foch —A good blooming dahlia of medium size. Color yellow tipped and splashed with red..... | \$0.50 |
| John Lewis Childs (Boston) —Bright yellow splashed and striped brilliant carmine, large flower with good stems..... | \$0.50 | Marcella —Bright luminous pink, light tips and yellow at base, long straight stiff stems | \$0.25 |
| Jersey's Masterpiece (Waite) —Strawberry pink suffused gold at base of the florets. This is a bold and upstanding variety, possessing all the attributes of an exhibition variety. The stems are strong and stiff and the foliage is thick in texture..... | \$2.25 | Margaret Masson (F. & M.) —New, large beautiful silvery rose pink on perfect stems..... | \$0.50 |
| Judge Marean —Salmon pink, red, iridescent, orange yellow and pure gold..... | \$0.50 | Margaret Woodrow Wilson (F. & M.) —Large flowers of opalescent pink with a Phlox reverse. Fine exhibition flower, broad petals and perfect form. Prolific bloomer, held on strong stems..... | \$1.00 |
| Kemp's Violet-Wonder — The best violet colored dahlia to date. Predominating color, rich nanthaline violet, lightening to bluish violet at tips of petals with a lavender | | Marmion (Mastic) — Pure golden yellow with bronze suffusion on reverse of petals, very large thick flower. Strong plants and stems, very attractive flower..... | \$1.00 |
| | | Maude Johnson — Pinkish violet, shading to white, flushed lavender, base of petals gold and on ends of the long wavy petals a tiny tip of gold. The large flowers are held well above the foliage on long stiff stems. Prolific bloomer | \$1.00 |

- | | Price | | Price |
|---|--------|---|--------|
| Mephistopheles — Ruby red, some petals golden yellow tipped, great bloomer and beauty | \$0.75 | Myrta Garrison (Edison) — Extra fine buff to apricot yellow, shaded darker at center. Large flower, perfect petals with round tips. Good stems | \$0.75 |
| Merrick —Light maroon with mahogany reverse. An exhibition flower of merit and new color..... | \$1.00 | Nancy Helen —Fine delicate shrimp pink flower on good stiff stems, fine cut flower..... | \$0.40 |
| Millionaire — Very fine immense flower, lavender pink shading to white center..... | \$0.50 | Nancy Sue Lang (Broomall) —An immense dahlia for exhibition purposes. Flowers are star-like in formation, red, tipped with gold. Strong, stiff stems and very attractive | \$1.50 |
| Monmouth Champion (Kemp) —A great favorite bearing many massive blooms of brilliant orange flame; 10-inch flowers were common, many measured 11½ and 12 inches | \$4.00 | Nanaquaket (Richards) — An immense bloom of extraordinary beauty. The color is a most beautiful shade of delicate orchid pink, each petal bordered with a hair line of deeper orchid color. Petals broad and long, with fine placement, and the flower can be easily grown from 10 to 12 inches in diameter, with proper disbudding. Good stems, a healthy grower and profuse bloomer. Height, 5 feet..... | \$3.00 |
| Monmouth Giant (Kemp) — This giant dahlia is a clear sparkling orchid color of unusual beauty and refinement. Of great depth full to the center and will grow 12 inches in diameter with good cultivation. Strong plants, 7 feet high. Early prolific bloomer held well on long stiff stems..... | \$2.00 | Nobilis (Doolittle) —A wonderfully beautiful flower, one of California's best. Color bright scarlet, edged and tipped white. Strong, upright stem. Free bloomer..... | \$0.75 |
| Mordella (Deco.) —A real art dahlia of beautiful clear shade of apricot buff. Large blossoms are held above foliage on long graceful stems. Profuse bloomer. Strong plants | \$1.00 | Our Country (Stillman) —Deep purple florets heavily tipped, white, a Marean production..... | \$0.75 |
| Mr. Crowley —Bright flowing shade of salmon pink, tipped creamy yellow, very showy, one of the finest | \$0.50 | Paul Michaels — Apricot brown shade, one of the largest and best | \$0.50 |
| Mrs. Carl Salbach —Giant rose pink decorative with light base, long stiff stems, and excellent flower..... | \$0.50 | Pride of Ft. Morgan (Plafger) —A wonderful giant red decorative dahlia, with good depth. It is one of the most attractive and perfect reds I have seen, and grows about 9 inches without disbudding. Held erect on good stiff stems..... | \$1.25 |
| Mrs. C. H. Dresselhuis —Soft rose pink with white suffusion toward tips, medium size plants, fine stems, best cut flowers and prolific bloomer..... | \$0.40 | Pride of San Francisco — Finest peach pink shaded to salmon center, a perfect flower with good stems and excellent foliage..... | \$0.50 |
| Mrs. Eleanor Martin (Pelicano) —Color dark mulberry purple or dark rose shade with violet reverse, large flower of new color and fine stems | \$0.50 | Pride of Springhill (Edison) —One of the finest rose reds, center petals cream splashed, thick flower full to the center. Very attractive flower and good stiff stems, strong grower..... | \$0.75 |
| Mrs. F. E. Bullard —Beautiful light pink, flowers immense size held on strong stems and are extra fine and deep, coming full decorative usually | \$1.00 | Pride of Stratford (Meachem) —A giant autumn shaded dahlia of orange yellow with base of shading to reddish bronze reverse, good stiff stems | \$1.25 |
| Mrs. Ide Ver Warner (Marean) —Deep mauve pink, beautiful and large, long stiff stems, one of the finest | \$0.50 | | |
| Mrs. John Scheppers (Marean) —Opens as clear canary yellow gradually changing to delicate shading of pink on outer petals..... | \$0.50 | | |

Price

Queen of the Garden Beautiful (Burns)—An enormous clear primrose yellow. A strong, vigorous grower with extra long tough stems. It has been awarded numerous prizes as the "largest flower in the show" not only in California but throughout the country. This extraordinary bloom lasts for days when cut...\$1.00

Queen Mary—Of medium size, full high center, even up to November, when killed by frost. Color clear silvery cerise pink. Flowers freely on long stiff stems...\$0.35

Queen Josephine—Rich royal purple suffused with white, with two veins of white running through each petal, tall plants and long stems, fine cut flower...\$0.50

Regal (Boston)—Immense dahlia of a combination of autumn shades of bronze heavily suffused with old rose and shading to gold at base, giving it effect of tarnished copper. Flowers grow out of foliage on good stems. Great prize winner...\$1.00

Radio (Sampson)—A bi-color blood red, tipped yellow, very large, attractive and brilliant flower. Held on rigid stems...\$0.60

Ramona Rose—A dahlia of medium size of beautiful rose red. Prolific bloomer and strong plants...\$0.50

Richelieu (Redfern)—A large deep velvety red or phlox purple. Sturdy bushes, free bloomer, flowers held at right angles on strong, straight stems. Fine exhibition flower and good keeper when cut...\$1.00

Robert Scott (Bedford)—Apricot shaded rose. Very large exhibition flower held on strong stems...\$1.00

Robert Treat (Mueller)—The American Beauty colored dahlia. A strong, vigorous grower and free bloomer. Beautiful form and large size...\$0.75

Rosa Nell (Broomall)—The dahlia without a fault, color clear bright rose, large heavy flower, one of the best...\$0.50

Roman Gold—Brilliant pure bright yellow, 4-6 inch flower, held on long stiff stem. Beautiful cupped petals and extra fine cut flower...\$0.50

Price

Rose Fallon (Harding)—Very fine flower of pleasing shades of amber, russet and salmon. Perfect form, fine petals and good stems\$0.75

Rosella—A fine deep bright rose pink, of perfect form and petals, medium sized on good stems, prolific\$0.50

Ruth Parmalee—California Decorative—New large rose pink or lilac color, or henna shading to golden yellow at base.....\$0.50

Sagamore (Badetty Bros.)—An exceptionally fine exhibition or cut flower of golden color, shaded toward the center with a warm salmon-rose or orange buff. Stems straight and stiff and wonderful keeping qualities when cut makes this flower most desirable.....\$0.50

St. Francis (Boston)—Beautiful soft cream color, brightened with pinkish glow on outer petals. Large flower held on long stiff stems and keeps well when cut. Strong grower.....\$0.75

Sanhican's Queen (Masson)—Beautiful dahlia of unusual coloring which is almost impossible to describe. It is a beautiful apricot with blending of carmine rose. Fine thick 7 to 9-inch flowers carried well above the foliage on long stiff stem\$2.00

Sanhican's Gem (Masson)—Medium sized flowers of old rose, suffused amber. Good stems.....\$1.00

Salbach White (Salbach)—A superb waxy white dahlia on a perfect stem\$0.50

Scout Girl—Small deep crimson flower with dot on end of each petal, a grand new novelty with excellent stems\$0.50

Seals California (Seal)—Beautiful huge dahlia with blending color of bright golden yellow at center, shading lighter toward outer petals, the tips of which are shaded with bronzy rosy points. Very large bold flower on perfect stems\$2.00

Sheba—Fine bright red tipped with white—good flower on good stems\$0.50

	Price		Price
Silver King —A most beautiful lavender pink shaded and flushed with white, giving it a silvery sheen. Size about 6 inches. Held on good stiff stems and a free bloomer	\$0.50	Tommy Atkins —Glowing scarlet red with long stems; a large flower	\$0.75
Spotswood Beauty (Rigler) —One of the most beautiful and one of the best pink dahlias ever introduced. The color is a clear chatenay pink with a slight shading of lemon yellow at base of petals. Flowers are seven to eight inches in diameter and of great depth and held well above the foliage on long stiff cane like stems. Should be in every collection	\$2.50	Treasure Island (Maytrott) —A deep gold of large size. It is freely produced and has unusually good substance. Stems are fine. This was probably one of the best of the new introductions last season. Medium height.....	\$3.00
Springhill Gem (Edison) —Fine golden orange, perfect flower on long stiff stems. Medium size, always perfect, fine keeper when cut. Strong plants	\$0.50	Trentonian (Fisher & Masson) —Decorative. Large, perfect decorative, the color is in the brown tones; the flowers are of fine formation and produced in quantity on stiff stems.....	\$0.50
Sweetheart —California Decorative Delicate salmon pink with extra good stems, fine flower under artificial light.....	\$0.50	Tryphinnie (California Decorative) —Bright shell pink, shading lighter at the tips of the petals. At the base and throughout the petals is seen a bright golden yellow. The reverse of the petals is a rich pink.....	\$0.50
Theodore Vail —Fine large flower, old gold shading to apricot, long stems	\$0.50	Valentino (Bessie Boston Novelty, 1928) —A flower of great size and beauty and attractive formation. It is a true salmon pink shading to cream at center and is held erect on long upright stems above bush of medium height. A very fine and beautiful dahlia.....	\$2.50
The Emperor (Marean) —A maroon dahlia of the finest type, made up of long flat petals; color does not spot under any weather conditions and flower is of enormous size, borne on long stiff stems. An exhibition variety	\$0.50	Venus —Soft creamy white, lavender suffused, strong grower and fine stems.....	\$0.50
The World (Dahliadel) —The color of this variety is a deep rosy magenta overlaid garnet and with silver shadings on the edges of the petals. The stems are perfect. Foliage heavy and resistant to insects. A splendid thrifty grower and much admired the past season	\$2.50	Watchung Sunrise (Smith) —Color golden amber with reverse of the petals showing rose pink and each petal edged rose pink, making it very distinctive. Massive flowers held on strong erect stems.....	\$2.00
		World's Best White —Large pure white of the best size and form, fine for exhibition.....	\$1.00

INFORMAL DECORATIVE DAHLIAS

Fully double flowers, with margins of the floral rays slightly or not at all revolute, floral rays generally long, twisted or pointed, and usually irregular in arrangement. For example, Fort Monmouth, Jane Cowl, Barbara Redfern, Mrs. Alfred B. Seal, Insulinde, Kathleen Norris.

A. C. Lawrence —Very fine large thick flower of the finest delicate creamy pink with fine petals and good stems.....	\$0.50	Alexander Pope —Large bloom of a beautiful crimson shade toward the center almost black. Good bloomer having fine stems.....	\$1.00
Alex Waldie —A large well formed flower of soft pleasing color, creamy ground overlaid with delicate salmon pink.....	\$0.50	Al Koran —A fine large golden yellow, petals slightly waxed. A tall strong grower with the best of habit	\$0.75

Price

Altamont (Kemp)—Rose-pink deepening to American Beauty Rose toward center of flower, which is larger than average, fully double, and with slightly curled petals. Blooms keep well when cut. Good exhibition variety.....\$1.25

Amun Ra (Seal)—Immense flower color of setting sun, gorgeous shades of copper and orange shaded amber and gold deepening to full center to a rich dark reddish brown.....\$0.50

Argonaut—Rich golden yellow with apricot suffusion passing to pure apricot at the center. Beautiful large, deep, perfect flower. Fine cut petals and fine stems.....\$1.00

Aurora—Attractive dahlia. Apricot with lovely shadings of peach and red pink. Long stem.....\$0.50

Barbara (Redfern)—Burnished copper shading to gold with a suffusion of salmon. Flowers of immense size and depth borne on heavy stiff stems. Blooms continually until end of season.....\$1.25

Bertha Horn—Beautiful flower on strong stems, color yellow and bronze.....\$0.50

Beau Ideal (Boston)—A novelty flower of immense size. It opens lavender at first developing a pink tone later on. The lavender blooms soften to white shaded lavender in the center and the pink flowers show a deeper pink in the center—the two colors blending harmoniously.....\$2.50

Berengaria (English Deco.)—Considered one of the best of English varieties. Immense blooms, good stems, strong plants, free bloomer. Colors are orange at center, to gold at tips, with golden sheen over all.....\$1.50

Black Jack (Wastilius)—A very large bloom of deepest velvety maroon, almost black.....\$0.75

Bob Pleuse—Color oxblood red with each petal tipped white, extra large, a great prize winner.....\$0.50

California Superba (Decorative)—In color a delicate shade of pink without any blue tone, gradually shading to a white center.....\$0.50

Caruse—Beautiful pink, yellow and salmon blended together, large heavy unique flower.....\$0.50

Price

Chas. Sherbrook (Oregon)—Hybrid Cactus—Medium sized flower with curly petals, scarlet with orange reverse, free flowering, good for cutting.....\$0.50

Chas. Stratton—An exhibition flower, very large, pale gold shaded and tipped with old rose. Won several prizes as largest flower in show.....\$0.50

City of Trenton (Prentice-Dahliadel)—A strong, robust grower producing flowers up to 12 inches across with perfectly full centers on long erect stems. First class exhibition variety. Its color is a beautiful reddish apricot with rose suffusion, having a sheen of lustre throughout the flower difficult to describe. Blooms are of splendid form. Curled petals give a two-tone effect, creating the impression of tongues of flame radiating from a full center. A very brilliant dahlia.....\$2.00

Coquette—(1929 F. & M. introduction)—A most beautiful robust dahlia of red and gold. Face of petals musketeer red with gold shadings and golden sunset color at points. Thick fluffy flower with curled and twisted petals like a golden sunset. Free bloomer held on long stiff stems. Strong grower.....\$3.00

Couronne D'or (French Decorative)—A wonderfully fine large flower of a rich golden apricot color with the reverse of the petals rosy carmine, which reflects in a luminous manner to the face of the flower.....\$0.50

Conquistador—Soft yellow shading to a glowing pink at base of petals. Pink color is very pronounced, giving the flower the appearance of being illuminated within. Massive flower on 4-foot stems. Flower is rather coarse petaled, broad and deep, being vigorous and not easily soiled by sun, moisture or winds. Fine for exhibition.....\$5.00

Dad's Favorite (D)—We would call this a greatly improved Grizzly, as flowers are very much like that old favorite in both shape and coloring except that they are much larger in size. Blooms are a rich, deep, crimson maroon. Stems are good and plants are strong growers.....\$1.25

	Price		Price
Donnersmark —Pure dark red. Thick flower of medium size, good stems	\$0.50	Erecta (Padre) —Large beautiful mauve pink, fine stem, free bloomer	\$0.75
Dorothy Dix (Boston) —An immense blossom of silvery pink of distinct incurved formation, centers always closed. Petals roll very evenly. Stem is perfect, long and stiff. Tall sturdy plants that produce large exhibition flowers early and late, which are delightful for cutting.....	\$4.00	Eugenia (Barker) —An outstanding fluffy old rose hybrid cactus whose lovely color and gracefully waved and rolled petals commends it to beauty lovers. Blooms are of large size and are carried on excellent stems above a strong growing plant. Was awarded the Garden & Home Builder, Achievement Medal at Los Angeles. Tubers	\$1.00
Dorothy Stone (F. & M.) —This is a beautiful rose pink Decorative that was a rival for Kathleen Norris last year. We know many that prefer this variety. We have had the pleasure of growing it and it is a splendid grower. The foliage being tough and leathery in texture. The stems are good and the large blooms are produced quite freely	\$5.00	Eva Quadling (Nunerville, 1930) —A fine flower of carmine and spectrum, blended with center of ox blood red, with a back of pale mauve veining.....	\$3.50
Eagle Rock Beauty (Broomall) —A glorious combination of beautiful pink and cream, immense blooms held stiffly on erect strong stems. A vigorous free bloomer and admired by all who have seen it.....	\$1.50	Evelyn M. Dane —A very sturdy grower with exceptionally stout stem, a large beautifully formed flower of pale pink shading to cream white in center, has good depth to bloom, a fine dahlia.....	\$0.50
Edison's White —Glistening white with pale lemon shadings from half way up petals to the center. Large flower with long waxey petals. Tall grower, with stems and very attractive.....	\$1.00	Flaming Meteor (Barker) —Orange scarlet deepening to burnt orange at center. Large flower held on long stiff cane like stems.....	\$0.75
El Dorado (Boston) —A low-growing bush with immense golden blooms which stand up and look you in the face, and the depth corresponds to the size. It is of a vivid gold coloring which is emphasized by the petals.....	\$1.00	Fordhook Twilight (Burpee) —Magnificent flowers of a beautiful silvery white, showing a heavy suffusion of rose on the reverse of each petal. The effect of this is very striking. Of excellent size, carried on long stems and blooming profusely; 3 feet tall.....	\$1.75
Elsie Daniels —Fine exhibition flower with long petals. Center pure white, shading to fine lilic pink on outer rows of petals. A prolific bloomer held on good stiff stems.....	\$0.75	Fort Monmouth (Kemp) —A giant rich wine red with an undertone of brilliant crimson maroon tips of petals, a slight flush tone which greatly enhances the beauty of the flower. Strong, healthy grower, not bothered by insects and has been grown over 15 in. in diameter and 6 in. thick.....	\$2.50
Elsie Oliver (Boston) —Creamy pink, true Hybrid Cactus large dahlia, long wavy petals, one of the best	\$0.75	Fort Washington (Rindfleisch) —A very large, well formed flower of a rich velvety maroon color. Very attractive, free blooming flower, held on long stiff stems.....	\$1.50
Emma Marie (Maytrott) —In color this is a beautiful clear bright pink with a white center. Describing it by "The Repertoire de Couleurs" it is a bright shade of violet rose. Flowers held on good erect stems	\$0.50	Francesca (Carbone) —A giant from California of perfect formation. Color is old rose to dull tanned rose with distinct violet suffusion. There are gold markings on the petals and a bluish sheen. Fine under artificial light and held on long stiff stems. Plants strong, having healthy foliage.....	\$2.00

	Price		Price
Frau Seth Schief —Bright lively chamois color slightly suffused orange, extra large flower on perfect stems, 8-10 inch blooms.....	\$0.50	Grizette —Large golden yellow flower. Petals heavy, wavy and rolled, flush salmon pink tips flattened out, making a fine flower. Stems good and stiff.....	\$0.50
Galatea —Faint yellow embellished with suffusion of pink on the outer petals, flowers large with many petals and fine stems.....	\$0.50	Henry Sheldon, Jr. (Murphy) —An extra fine exhibition flower, white center with outer row of petals a beautiful shell pink; can be grown very large, is a profuse bloomer; a Dahlia for all who wish beauty combined with size....	\$0.75
Gladys Sherwood (Broomall) —Fine large white with long twisted and curly petals, good stems and extra fine	\$0.50	His Majesty (Boston) —Color a bright scarlet, formation of petals slightly irregular. An exceptionally free bloomer and does not require heavy disbudding to obtain size and stem. One of the best reds.....	\$1.00
Glen Cove Beauty —A cross between Ambassador and Mrs. John T. Scheepers, retaining the good points of each. Color a fine chamois edged pink. Fine large flowers on cane-like stems, vigorous grower and free bloomer	\$1.50	Islam Patrol —Gold and dark maroon, large flower with curled petals	\$0.50
Gloire de Verdun —French Decorative—Purple crimson, immense flower on strong long stems.....	\$0.50	Jane Cowl (Downs) —An immense flower of buff; perfect shaped flower produced on long stiff stems—won several medals	\$1.00
Gloriana —Pure old gold with reddish glow to center, long strong stems, a large and good cut flower	\$0.50	Jack O'Lantern, Dec. (Success) —Introduced in 1928 and scoring 87 at New Jersey Trial grounds. Flower scarlet, reverse pure yellow, large and very striking. Stems the best. Roots.....	\$2.00
Glory of Sunrise Trail (Babylon) —A large beautiful flower of maize yellow, tipped violet, with lavender reverse. Strikingly beautiful	\$2.00	Jersey's Ideal (Waite) —Massive flower of 8 to 11 inches across, fine lavender, perfect petals, flowers very thick, on fine stems.....	\$1.50
Goodnight (Reed) (I. Dec.) —We have grown many fine dark colored dahlias, but we find in this variety a monster in size and the rich color of ox-blood red shaded maroon, is the greatest attraction in the garden and in the show-room. One of the outstanding Dahlias at the National Flower Show at Atlantic City, winning first prize for basket. A sure winner	\$4.00	Jim Moore (Loller) (I. D.) —This fine Dahlia was introduced by the originator Spring of 1930. It made good the past season in all sections of the country. The color is a clear primrose yellow shading to gold, with tints and flushes of salmon throughout the flower. It is a deep, extra long-petaled flower of noble proportions. The form is unusual and distinctive, appearing to be a definite cross between Watchung Sunrise and Siskiyou, having the color of the former and the form of the latter, but with more depth and better centers than Siskiyou. Plants make a very strong, healthy growth as neither insects nor hot, dry weather seems to bother it. Stems are long, strong and straight, holding the flowers facing. Will produce an abundance of perfect exhibition blooms throughout the season. Was on honor roll of 1929.....	\$4.00
Grace Records, Dec. (Records-May-trott) —An outstanding novelty of 1929, giving Kathleen Norris a close run at Camden Show. A very large flower of artistic formation, tipped and suffused lavender on white ground. Petals cleft. A tall strong grower.....	\$3.50		
Grandola (Success) —Brilliant orange, medium size blooms held erect on fine stems. Certain to be very popular as a cut flower. A Dahlia that attracts immediate attention	\$1.00		

- Junior (Decorative)**—Large exhibition flower, a free bloomer on perfect stems, color soft delicate shade of lavender pink.....\$0.50
- Kathleen Norris (F. & M.)**—A bloom of gigantic proportions. We believe this is the greatest pink Dahlia to date. Color a true rose pink, later deepening to mallow pink, but paler in the young central petals. Petals are broad, overlapping with twisted ends, and fill the center. Great bloomer and excellent keeper. Strong grower with dark green leathery foliage\$4.00
- King Albert (Ballego)**—Long wide petals of deep purple reverse striped with cerise, giving flower fine, rich tonee. Fine stiff stems.....\$0.60
- King Midas (Peacock)**—Size, 12 in. by 5 in.; height, 5 ft. The color is a pure golden yellow. Stems long, stiff and straight. One of the greatest yellows. Won in San Francisco as best Dahlia of Eastern origin.....\$3.00
- Koh-I-Noor**—1924 introduction, deep velvety maroon, nearly black sometimes, large perfect flower, long petals and ideal stems\$0.50
- Lady Helen**—Long stemmed beautiful pink and cream with white lines, large and one of the finest.....\$0.50
- Lake Pend Oreille**—Flesh pink, shading darker at the outer edge, with a faint suffusion of yellow. Very graceful formation, the florets curling and waving. The stem is strong enough to hold the bloom erect and it is a free bloomer. This Dahlia has attracted considerable attention throughout the Northwest wherever exhibited\$1.00
- May Trower (Seal)**—A huge deep most artistic flower, ranging in color from palest gold to deep golden apricot, some flowers come tipped white. Hardly any two blooms are same. The long stiff rigid stems hold the large deep flowers erect.....\$1.50
- Milpas (New)**—Grand, large, beautiful deep pink, on fine stems.....\$0.50
- Miss Atlantic City**—Very artistic flowers with long tapered petals which curve back toward the stem. Color lilac rose suffused reddish golden bronze. Fine new variety, held on strong wiry stems.....\$0.50
- Miss San Francisco (Pelicano)**—One of the best new Dahlias of true orchid mixed with deep rose. A large beautiful flower of great substance and depth, always full to the center\$2.00
- Miss New York (Huntington)**—Color an orchid pink. Good size, long wavy petals and held on stiff stems and blooms early. Plants strong and tall.....\$0.60
- Mrs. Coolidge**—Fine medium sized pink with base of light gold, not large, but extra fine.....\$0.60
- Mrs. Ethel F. T. Smith**—Creamy white shading to lemon at center\$0.50
- Mrs. E. L. Lindsay (Broomall)**—Scarlet and gold; reproduced in an enormous decorative; color varies on different blooms.....\$0.60
- Mrs. Hugo Kind**—Large fine velvety red shade, extra long stems, fine for cutting\$0.40
- Mrs. Jas. Babbit (Root)**—A deep yellow, reverse of petals overlaid two colors are always in evidence with crimson. A very unusual color combination. When fully open, large and long petals curve in showing reverse, giving two-toned effect.....\$0.50
- Mt. Shasta (Stillman)**—Large Peony Cactus of creamy color shaded with pink, with good stems. Very fine, thick.....\$0.50
- My Maryland (Downs Dahlia Farms)**
This informal decorative is never the less, a lovely flower in clear rich pink—each twisted petal daintily tipped with ivory. The bush, stem and carriage are good. It is an Achievement Medal winner, was certified at Storrs, and is a Roll of Honor Dahlia.....\$2.00
- Naturee's Masterpiece (White)**—An immense bloom of gorgeous coloring that is hard to describe. A blending of old rose, cinnamon and metallic bronze and suffused with mulberry. A rich combination and an odd flower. Stems are extra long and are all that could be desired. Won the sweepstakes prize for the best flower in the show at the Portland Dahlia Show, 1927.....\$1.00

	Price		Price
Ninfea (Davis) —An early profuse bloomer. Color a soft lavender pink, shading to creamy white in the center. Broad upturned petals resembling a water lily, from which it derives its name.....	\$1.00	which is slightly lighter in color than the Glad. Outside of petals is tan, heavily edged with pink and shaded with chrome yellow, the reverse of petals smoky pink and the effect of this peculiar blending of colors is Ashes of Roses. Free bloomer with stiff stems	\$0.75
Nopal —An attractive spectrum red with curly petals and held on stiff wire-like stems. Good bloomer and attracts immediate attention.	\$2.00	Rose Glory —Large beautiful old rose shaded flower. Fine stems and bush.....	\$2.00
Pansy G. White (White) —Pale greenish yellow. Tips of outside rows a sulphur yellow, stiff heavy stems, thick flowers face the sky; on 1930 Roll of Honor	\$7.50	Rose Gem —A variety imported from Holland. The coloring is very beautiful and something entirely new—a pleasing shade of salmon red. Held on stiff stems well above the foliage.....	\$0.50
Papillon —A beautiful shade of old rose, with golden lights. Prolific bloomer, fine for exhibition and held on long stiff stems.....	\$1.00	Rodman Wanamaker (Peacock) —Mammoth in size and wonderful color. A golden bronze with salmon center.....	\$1.25
Peppers Delight —A gorgeous Dahlia with long curly petals which go back to the stem, making a very deep and showy bloom. The center is high and even late in the season. Color, yellow at center shading to cream, then watermelon-pink on the outer petals. Extra good stems and makes a hit with the florists.....	\$2.00	Sanhican's Monarch (F. & M.) —A dazzling exhibition Dahlia of deep Tyrian rose color at center, shading to lighter tone at point of petals. Full centers early and late. Free bloomer, having dark green foliage, black cane-like stems, holding flower perfectly out of the foliage on medium tall plant. Good keeper.....	\$0.75
Primula Rex, D. (Broomall) —Very light cream or primrose color. The flowers are immense with every good quality certainly far ahead of anything in its class and color. A magnificent new Dahlia	\$1.50	Sanhican's Peach (F. & M.) —A fluffy decorative of good size, exactly the shade of a ripe California peach with a real peach cheek glow. The petals are oddly twisted with staghorn tips. Rich dark green foliage; upright, straight stems; good habit of growth.....	\$1.00
Radiance —Glistening pink, of finest color, good size, good stems and fine for cutting	\$0.50	Santa Anna (Pelicans) —One of the largest and best hybrid cactus of this shade. A beautiful salmon-rose suffused with old gold. Flowers held well above the foliage on fine stems and the petals are long and wavy. Very attractive.....	\$1.50
Rio Rita (Fellows) —Geranium pink, slightly suffused white. One of the good new ones and very fine color	\$2.00	Sequoia Gigantea —Large full flower of butter cup yellow, tall and robust grower and held on good stems	\$0.50
Rookwood —A remarkable Dahlia, blooms early and perfect to the end of season, peculiar curled and twisted petals of pleasing cerise rose shade	\$0.50	Shudow's Lavender (Boston) —Very fine silvery lavender slightly shaded white, large flower always full to the center, held on long stiff stems.....	\$1.00
Romance —Soft pink to fawn color splashed carmine, center orange color	\$0.50		
Rosa Bonheur —A graceful combination of dainty form and clear color. Ivory white center, shading to a beautiful shell pink. Free blooming and splendid stem.....	\$0.60		
Rose Ash —If you like Rose Ash, the beautiful California Gladiolus, you will like the Dahlia Rose Ash			

- | | Price | | Price |
|--|--------|---|--------|
| Sir John Carling (Carver) —A 1930 introduction with all the best qualities, size, color, stem and foliage. A royal purple of entirely new shade unlike any other and does not burn or show an open center. Tall grower, huge blooms held on long stiff stems..... | \$5.00 | Syncopation —Large, shown blooms of cherry red and yellow. A free blooming, attractive flower held on splendid stems..... | \$1.00 |
| Snowdrift (Broomall) —One of the largest and finest whites, long wide waxy white petals..... | \$0.50 | Starlight (Boston, 1928) —Golden colored Dahlia that can be grown to immense size and of excellent form, petals roll perfect to the end of the season. The stems are stiff and strong, holding the flowers well above the foliage. Fine for exhibition; also keeps good when cut..... | \$2.50 |
| Southern Beauty —Extra large, of bright orange, long petals and fine long stems. Very attractive..... | \$0.75 | The Bay State (Marshall) —Cream and pink, a large light flower. A dependable grower with good flowers well displayed..... | \$1.00 |
| Spa —Beautiful large flowers of deepest shade of lilac on erect stems, dwarf grower..... | \$0.60 | The Telegram (Marshall) —A wonderful Dahlia. Tan to orange, tipped white; very striking. Large flowers held on good stems and a vigorous grower..... | \$1.25 |
| Spirit of St. Louis (Carver) —This Dahlia is a strong, vigorous grower with a distinctly pleasing foliage. The flowers are large and may be described as American Beauty Rose in color. The plants are medium in height and the stems strong and well able to hold the large flowers erect..... | \$4.00 | The Grizzly (Burns) —Dark maroon with long wavy petals, good stems; an attractive flower..... | \$0.50 |
| Springhill Buff (Edison) —Ochraceous buff with jasper pink on back of petals and jasper red on unopened petals at center. Flowers of good size and depth with long waved petals..... | \$0.75 | The Lemonade (Ward) —One of the finest colored yellow Dahlias of large size and a beautiful clear lemon yellow color. Full centered flowers are very large and borne on long stiff stems held high above the foliage..... | \$1.50 |
| Springhill Flame (Edison) —Extra bright rose red to almost scarlet, some slightly shaded with bronze. Long, large wide petals, which turn back, making a very thick, attractive flower. Strong plants and stiff stems. Few come peony flowered late in the season, but always good..... | \$0.75 | Tresor Anversois (Belgian Deco.) —Very large flower of exquisite shade of true of violet without trace of pink or yellow. Long wavy reflexed florets are held aloft on slender upright stems. A good keeper when cut and profuse bloomer..... | \$1.00 |
| Springhill Special (Edison) —Long petals slightly waved, beautiful dark ruby red streaked with white. Thick flower. Very fancy novelty, fine grower and prolific bloomer..... | \$0.50 | U. S. A. (Stillman) —Fine large flower of orange buff with long twisted and curled petals..... | \$0.60 |
| Springhill Velvet (Edison) —Dark maroon with velvety purple cast to the tips of center petals. Prolific bloomer, very fine keeper when cut, very full to center. Strong grower and has long stiff stems..... | \$0.50 | Waldheim Sunshine (1928 Peacock) —A most remarkable new Dahlia. True deep yellow with darker reflex with rich golden suffusion around full high center. Long wavy twisted petals of beautiful formation, relieving the immense flower from stiffness. Stems are long and stiff holding the face upright. A splendid free bloomer coming full to center throughout the season. Strong plants and the greatest of all yellows..... | \$3.00 |
| Sunmaid (Spacker) —Very large flowers of a beautiful shade of orange and gold and are of good depth. Held on good stems..... | \$1.25 | Washington City —Large pure white, petals long and wide; plants strong but not tall..... | \$0.50 |

	Price
Wizard of Oz (Doolittle) —A giant Dahlia of rare shade of glowing amber pink of soft salmon shades and held high on strong stem. A good prize winner and much in demand	\$0.50
Xavier —Large perfect petals of deep cream color with bronze cast	
	at center of flower. Outer petals a beautiful peach pink.....\$0.50
	at center of flower. Outer petals a beautiful peach pink.....\$0.50
	at center of flower. Outer petals a beautiful peach pink.....\$0.50

SEMI-CACTUS DAHLIAS

Fully double flowers, with the margins of the majority of the floral rays revolute for less than one-half of their length. For example, Edna Ferber, Francis Lobdell, Sun-kiss, Alice Whittier.

Cigarette (Boston) —White shaded and edged pomegranate red towards its base, some have more red than others, no two alike, long petals, some rolled, very odd flower on good stems.....	\$0.50
Daddy Butler (Seal) —An extremely beautiful flower of rosy carmine coloring, the petals twisted, showing a lighter reverse, an erect grower, foliage rather scant, stem of the best.....	\$0.50
Edna Ferber (F. & M.) —Glistening coral, shading to old rose. A splendid Dahlia with good stems and foliage	\$1.50
El Rey, Dec. (O. & C.) —A large flower, of a beautiful golden orange, shading to deeper orange at the center. Vigorous and insect resistant, with long, rigid stems. Winner of A. H. Achievement Medal, 1929. Also First Prize in Three Year Seedling Class, at both Santa Monica and San Leandro.....	\$4.00
Furniture City (Edison) —Clear deep lavender shade with bluish cast on outer ends of petals, long pointed and rolled petals, thick flower, nine inches across, strong plants and long stiff stems. Won first prize Michigan Dahlia Show, 1928	\$0.75
Frances Lobdell (Waite) —A profuse bloomer with mallow, pink flowers, shading to white centers	\$0.50
Jerseys' Radiant (Waite) —Bitter sweet orange; large flowers, produced on long stiff brown stems; a very attractive variety and much admired the past season.....	\$0.50
King Solomon —Beautiful orange, buff, with an iridescent sheen on the twirled and twisted petals. Profuse bloomer, held on good stiff stems. Has been awarded many prizes.....	\$0.50
Lady Elizabeth (H. C.) —Size, 6 in. by 3 in. Height, 5 ft. A new fringed type, light yellow, overlaid bronzy rose; entirely distinct and pleasing, with fringed petals.....	\$0.50
Lavender Beauty —A fine lavender, little lighter toward tip. Ends of petals serrated or fringed, a new novelty of medium size.....	\$0.50
Maid Marian (Mastic) —A very large heavy flower of the most beautiful shade of rose pink without a trace of purple or yellow. Petals curl and twist, forming a graceful bloom of indescribable charm	\$0.75
Mariposa (Boston) —True pink, center deeper cooled faint violet suffused veining adds to lovely coloring, fine stems.....	\$1.00
Minnie Eastman (Eastman) —A striking red and gold flower, up to 10 inches in size and on 3-foot (or more) stems. A large and vigorous plant and a most prolific bloomer, holding good size all the season. Very striking in the garden and fine for exhibition. It won a blue on vase of 12 of these at Portsmouth.....	\$2.50
Nagels Roem (Belgium Hyb. Cac.) —Coloring Naples yellow tinted with salmon and chamois of the most delicate shadings. Immense flowers held aloft on rigid stems. Has received three first class certificates and is one of the finest European introductions.....	\$1.25
Red Chief —Fine dark red, of good size, held on good stems.....	\$0.50
Silverado (Seal) —White with delicate silver lavender center. Shaggy long petals, making very attractive flower.....	\$0.75
Skylark —Large and fine, of orange shade, petals long and sharp, fine stems	\$0.50
Sweetbriar (English Cactus) —An exquisite shade of rose pink. The finest pink on the market	\$0.50

RECURVED AND STRAIGHT CACTUS DAHLIAS

Fully double flowers, with the margins of the majority of the floral rays revolute for one-half of their length or more, the floral rays being recurved or straight. For example, Ambassador.

	Price		Price
Ambassador (Broomall) —Soft, yellow center, salmon, amber and pink shadings, blending heavier towards tips; large flower on perfect stems	\$0.75	shape than Gladys Sherwood, with better stems, and habit, a beautiful flower. Height, 5 feet.....	\$1.50
Jean Chazot or Gay Paree —Medium sized flower with good stems, prolific bloomer and perfect flower, always of golden bronze or orange color	\$0.50	Mrs. Warnaar —Large fine cream white Cactus aging to flesh pink, long pointed petals, extra fine flower	\$0.50
Golden West —Large deep yellow, overlaid with orange.....	\$0.50	Nibelungenhort —Rather broad and flat petals, more or less curled or wisted, old rose with golden apricot suffusion	\$0.50
Ivernia —Long rolled petals with sharp points. Fine pink large cactus and good stiff stems.....	\$0.50	Pierre Le Bloud —White tips shading to wine center, medium size, odd colored flower, fine for cutting, attractive	\$0.50
Jack Hobbs (English Hyb. Cac.) —This new English Dahlia created a sensation when first exhibited. The numerous petals come full to the center. Color rich, clear cream at center to nearly white tips. Flowers held erect on an excellent stem.....	\$0.75	Rheinischer Frohsinn —Rich crimson carmine, white at base of petals, distinct and striking.....	\$0.50
La Catalina —Large deep colored red, nearly garnet. Profuse bloomer, good stems, tall thrifty plants and very attractive. New one. Petals long pointed and of bristling type.....	\$0.50	Ruth McLachlan (New 1929) —Beautiful large pink flower, with lavender cast toward ends of petals, center petals tipped darker, base of petals shaded with gold. Held on long stiff stems.....	\$0.75
Laurine (Broomall) — Heliotrope pink, large flower on long stiff stems; fine bloomer.....	\$0.50	Siskiyou (Broomall) —One of the largest on long stiff stems, holding flower erect; a pinkish Mauve color	\$1.00
Lavender Queen (New) —Pale lavender tipped petals, shading to base of deep golden yellow. Sharp pointed and rolled. Large fine flower held on good stems.....	\$0.50	Springfield —A brilliant red overlaid salmon. One of the bristling type, held on good stiff stems..	\$0.50
Marian Bromall (Broomall) —Pink and white. It is more Cactus in		Springhill Glow —One of the finest sulphur yellows, tipped brown when first opening. Prolific bloomer on fine long stems. Strong plants. Won first prize 1928 Michigan Dahlia Show	\$0.50

INCURVED CACTUS DAHLIAS

Fully double flowers, with the margins of the majority of the coral rays revolute for one-half or more of their length, the floral rays tending to curve toward the center of the flowers. For example, F. W. Fellows, Bearclaws Farncot.

Adelaide —Deep pink center shading out to nearly white tips. Long rolled petals, good size and fine stems	\$0.50	petals incurve, making a cup shaped flower. Attractive and held on long stiff petals.....	\$0.60
Andreas Hofer —One of the best new ones. Color a soft coral pink with creamy center. Beautiful, early and profuse	\$0.50	Betty Austin —Yellow base, blending to carmine rose petals, tips yellow and stems good	\$0.50
Aunt Therese (New) —A fine sulphur yellow. The long narrow		Chemekek —Large flowers, golden orange with yellow center. A good new one	\$0.50

	Price		Price
Crystal —Long twisted incurved petals of tender silvery pink passing to soft ivory white in center, good exhibition flower.....	\$0.50	Mrs. Margaret Stedwick —Quite the best incurved form to date, a beautiful clear pink. Stem might be better.....	\$0.50
Herbert Raby —A large ruby red flower with incurved petals, good stems, spidery formation, very attractive, tall grower	\$0.50	Mrs. Leo Nissen —A beautiful scarlet red, blending to peach red at center of the flower, with bright yellow at base of petals and at tips. A reflex of sulphur yellow veined and suffused pale peach red	\$0.50
Hoffnung —This variety produces large size flowers of perfect form; color satiny old rose illuminated by a golden suffusion in the center of the flower and each petal lightly tipped with the same color	\$0.50	Pennant (New) —Odd shade of orange, pink centers, five or six rows of outer petals incurved toward center surrounding a thick tufted border of petals around a small open center; good stems.....	\$0.50
Mary Door —Color bright tyrian pink, blending to white at center of flowers and tips of petals, with amaranth pink	\$0.50	Sinbad —Color a bright maroon with a reverse of the petals a lighter shade, and as they twist and turn the effect is a form of incurved; held on long wiry but stiff stems, extremely free bloomer	\$0.75
Mikado (New) —Deep garnet red with rolled waved narrow incurved petals with small petals at base of flower of bright yellow edged bright red, making very odd flower. Very attractive and has fine stems	\$0.50	6 varieties of 50c Incurved Cactus.....	\$2.00

BALL OR SHOW DAHLIAS

A. D. Livoni —Clear pink, beautifully quilled petals, perfect form and free flowering.....	\$0.25	King of Shows—Show —Very fine rich old gold, the finest of the show Dahlias	\$0.50
Bonnie Blue—Ball —A nearly blue color, a perfect ball Dahlia, one of the best.....	\$0.25	Les Armours de Madam —Fine large ball of beautiful pink, with small streaks and dots of ruby red. Very fine	\$0.35
Geo. W. Gero—Ball —Clear rose pink, a new hybrid	\$0.50	Maud Adams —One of the most delicate colors. A delicate clear shell pink. Fine form and good stems.....	\$0.35
Gold Medal—Ball —One of the finest, orange color edge with bright red	\$0.50	Mrs. W. H. Pepin—Show —A large perfect white, good stems and prolific bloomer.....	\$0.50
Grand Duke Alexis—Show —A large pure white with center faintly suffused with lavender, nice quilled petals, prolific bloomer.....	\$0.35	Vivian—Ball —Compact flower, fine quills of creamy white-edged rose violet	\$0.35

PEONY FLOWERED

Billionaire —Very large golden orange held on long stems, fine bloomer and bushes low and strong	\$0.50	Doris Willmore —An exceptionally fine peony dahlia of large size. Long, erect stems and extra good as cut flower.....	\$0.50
Camille Franchon —Aline red to rich garnet center, large yellow disk in center.....	\$0.50	Eleanor Herrick —Light maroon, large with good stems, thick flower, one of the finest	\$0.50
City of San Diego —Rosy Purple, some flowers purple and white, attractive and strong grower.....	\$0.50		

	Price		Price
Glorieux —Large deep golden yellow deepening to bronze in center, often tripped white. Petals very fine and fluffy. Small open center	\$0.50	Queen Elizabeth —Rosy mauve color, large flower and good bloomer and good stems	\$0.50
Georgous —Brilliant yellow shaded to scarlet, extra large thick flower and a beauty, held above the plant on long stiff stems.....	\$0.50	Rosalie Styles —Bright tyrian pink, tipped lighter, reflex pink. A good flower and vigorous grower. Profuse bloomer on long stems	\$0.50
Indian Prince —Large showy flower of dark maroon with a deep purple cast on reverse. Long wide petals and very thick with small open center	\$0.50	Springhill Purple Queen —Extra large wide long petals, flat tips curve back. Color a grand garnet and shaded with purple. Has small bright golden yellow center. Tall, strong grower	\$0.50
Kiwanian —Color rich American Beauty red, shading to purple red. Flowers are large and held on long stiff wiry stems. Petals are long and wavy.....	\$0.50	Springhill Rose —One of the finest deep pinks, tips a lighter shade when fully open. Opens when small, but grows to a flower of large size with fine waxed petals and long stiff stems. Tall grower, very attractive.....	\$0.50
Lady Alla —Bright scarlet, free bloomer, very showy and a good cut flower.....	\$0.50	The Oriole —Fine buff yellow with long curly petals, some splashed with white, good stems and free bloomer	\$0.50
Lady of Honor —Extra large flowers borne on very long stems. Color apricot shaded to fawn pink.....	\$0.50	Vivandiere —Immense size and great depth, color a lively cherry carmine shading lighter toward the tips. Very attractive	\$0.50
Mrs. Jessie L. Seal —Large flower, old rose with gold shadings	\$0.50		
Pearl uggles —Large beautiful crimson rose and white.....	\$0.50		

POM POMS

Achilles —Flesh color to lavender, tipped pink.....	\$0.35	Cardinal —Fine bright cardinal red.....	\$0.35
Aimee —A new small bronze flower.....	\$0.35	Darkeye —Fine form and size. A fine white with light lavender tips with center a little darker.....	\$0.35
Albert Ade'bert —Pure white with good size and stiff stems.....	\$0.35	Darkness —One of the darkest of maroons. Good stems, fine for cutting	\$0.35
Alewine —A beautiful white, faintly shaded with light lavender around center. One of the larger pom poms and finest for cutting	\$0.35	Dee Dee —A good lavender shade. Free blooming and long stemmed.....	\$0.35
Arbutus —Light pink. Well formed flower, good stems, fine for bouquets	\$0.35	Dr. Frau Knabb —Round, good white tipped purple.....	\$0.35
Belle of Springfield —A splendid variety and the finest type in pom-poms, flowers of perfect shape, soft rosy red, and borne in profusion on slender stems above the foliage	\$0.35	Douglas Turke —Golden yellow tipped and shaded salmon.....	\$0.35
Eobby —Fine plum color or light purple	\$0.35	Effect —Glowing red with fine long stems	\$0.35
Bronze Beauty —Lovely shade of amber, fine for cutting.....	\$0.35	Elizabeth —Fine golden yellow edged red.....	\$0.35
		Elegenta —Flowers of lovely deep pink shade and a free bloomer.....	\$0.35
		Elfine —Fine light creamy yellow....	\$0.35

	Price		Price
Fall Glory (Deco. Pom-Pom) —Finest small deco, of golden orange, very excellent for table decorations	\$0.35	Little Jennie —A clear peach blossom pink color. Excellent for cutting	\$0.35
Flame —Bright orange scarlet to flame	\$0.35	Little Jewel (Deco. Pom-Pom) —One of the finest small light pink Dahlias. Good stems, fine for table decorations.....	\$0.35
Gretchen Heine —Fine white, edged pink	\$0.35	Portio —Deep mauve tipped silver.....	\$0.35
Harry Snook —Light pink with pale center	\$0.35	Pee Wee —Fine yellow to brown. One of the smallest.....	\$0.35
Isabel —Small, pure white	\$0.35	Phyllis —Deep yellow edged and shaded rose red	\$0.35
Jessica —A combination of amber and salmon tinted red. Very showy, blooms profusely and continually	\$0.35	Pothart —Best of brightest dark reds, fine form and very showy. Long stems	\$0.35
Kitty C. —Gold edged red.....	\$0.35	Prince Charming —Lavender heavily tipped purple.....	\$0.35
Lassie —Yellow at base. Tipped rose	\$0.35	Purity —Pure white of fine form and good stems	\$0.35
Leader —Lemon, tipped purple, free bloomer	\$0.35	Scarlet Gem —One of the finest scarlets. Hld on good stems.....	\$0.35
Little Beeswing —Small yellow, tipped deep cherry. One of the finest	\$0.35	Silvercrest —Good pure white	\$0.35
Little Edith —Yellow tipped scarlet. A perfect exhibition variety as well as one of the best for garden and cutting. Very perfect formation	\$0.35	Spy —Orange scarlet. A very fine one	\$0.35
Little Herman —Cardinal red, shaded maroon, tipped white.....	\$0.35	Star of the East —Pure white, long stems, small open center	\$0.25
Collection of 12 varieties of Pom Poms for		Sunset —Good gold color, fine flower and stems	\$0.35
		Vivid —A very fine bright red with good stems.....	\$0.35
		Yellow Gem —Small pure yellow.....	\$0.35
		Collection of 12 varieties of Pom Poms for	\$3.00

GLADIOLUS AND HOW TO GROW THEM

PLANTING AND CARE OF G GLADIOLUS

The gladiolus is easily grown. It will do well in any soil but a rich sandy loam is best. They should be planted where they will have plenty of sunshine. Plant any time from the middle of April to the last week in May, placing the bulbs about four to six inches deep and at least four inches apart. The top soil should be kept loose and free from weeds. A thorough soaking once a week during severe drought is necessary for best results, but constant cultivation will do much to conserve moisture.

It is best not to plant gladiolus in the same place many years in succession. New ground each year is best. Should your soil need enriching you will find a good root crop fertilizer, such as bone meal or a good pulverized dry manure best for the purpose.

You will enjoy your gladiolus, and appreciate your bloom more, if each variety is staked and labeled with its proper name.

Dig bulbs in the late fall before they are too ripe. With a sharp knife or shears cut the tops close to the bulb. Dry them in the air and sunshine for a week or two, being sure to protect them from frost at night. Remove the dirt and the old decayed bulb before storing (to leave this until spring is detrimental to the bulb.) Store in a cool dry cellar.

CUTTING FLOWERS

For best results, cut the spike when the first flower opens, leaving at least four or five leaves on the stalk to mature the bulb. Each morning pick off all the wilted bloom, cut off a little of the stem, rinse and give fresh water. Placing them in a cool cellar over night will greatly refresh and improve them.

Many varieties I do not carry a large stock of, and orders will be filled in rotation.

	Each	Dozen		Each	Dozen
Admiration —American Beauty pink shade with violet rose throat	\$0.10	\$1.00	Diana —A very fine red, good commercial variety.....	.10	1.00
Albania —One of the best whites, large with broad petals, tips well rounded and edges finely ruffled.....	.05	.50	Dorothy McKibbin — Ruffled rose pink shading to pale pink in throat, reverse deep rose pink. Throat and lower center petals blotched rose red.....	.10	1.00
American Beauty —Deiners—Beautiful pink with creamy throat striped ruby.....	.10	1.00	Dr. W. A. Van Vleet —Fine rose pink flower, tall and early05	.50
Alma Gluck (Prim) —Fine pink with yellow throat.....	.08	.80	Dr. Neeley —White, marked with pink slender spike05	.50
Anna Eberius — Deiners — Deep rodamine purple with deeper colored throat and center05	.50	Dr. F. E. Bennett —The most brilliant red, tall and large flowers; a most striking variety15	1.50
Appleblossom (New) — Very attractive appleblossom pink, tall straight spike, many flowers open at one time; a rare beauty10	1.00	Dr. R. T. Jackson —Deep rich crimson maroon07	.70
Avalon —Extra choice, blush white with beautiful throat07	.70	Eighth Wonder (Kundreds)—Large flower of mahogany brownish shade overcase a smoky color. Strong grower, one of the finest odd shades. Stock limited25	2.50
Arden (Prim.)—Large watermelon pink, ruffled, many open at a time.....	.05	.50	Elizabeth Tabor — Delicate rosy pink on white ground. Rich dark crimson blotch on lower petals.....	.10	1.00
Bengal Tiger — Very odd color, reddish brown striped like a tiger10	1.00	Elf —Lemon yellow in bud, opens pure white with delicate lemon tip.....	.10	1.00
Berty Snow —Large lavender. The best I have seen.....	.25	2.50	Elora — White with yellow throat blotcher carmine, large, flowers very early....	.05	.50
Break of Day —Immense flower on a massive spike. Soft La France pink, suffused over cream ground.....	.07	.70	E. J. Shaylor — Large deep rose pink ruffled and one of the finest and best prize winners05	.50
Butterboy (Prim.)—Wonderful large yellow, fine for the vase.....	.05	.50	Europe —Beautiful large pure white, many flowers open at the same time.....	.10	1.00
Byron L. Smith —One of the finest, lavender pink on white ground; extra fine cut flower05	.50	Flaming Sword — Very tall straight spike with 10 or more flowers open at a time. Beautiful brilliant red overlaid with orange; a splendid flower, very early15	1.50
Catherine Coleman —One of the largest and finest, deep coral pink on tall stalks.....	.15	1.50	Ferne Kyle — Large ruffled creamy white, very vigorous, won first prize at Rochester, 192507	.70
Cherry Rose — Tall strong plant and spike. Wide open flowers of rich cherry rose, color penciled and feathered deeper rose red.....	.15	1.50	Freda — Massive pink with very fine spike05	.50
Coral —Beautiful shade of coral pink cream throat.....	.10	1.00	Geraldine Farrar —Pale lavender violet, deeper violet on lower petal; beautiful rare shade in glads.....	.20	2.00
Crinkles —A grand heavily ruffled deep pink and a prize winner.....	.15	1.50			

	Each	Dozen		Each	Dozen
Glendale —Tall graceful purple15	1.50	J. A. Carbone —A large intense orange salmon, tall and robust.....	.15	1.50
Giant Nymph —La France pink creamy throat, large flowers on tall spikes07	.70	John T. Pirie —An outstanding novelty of great merit. Mahogany brown, throat darker brown bordered yellow; unusual and fine15	1.50
Glorius —Ruffled soft cream color, deep creamy apricot throat, tall and strong; many blossoms open at once15	1.50	Jewell —Large wide open flower, salmon pink with golden yellow throat; one of the finest primulas.....	.05	.50
Goliath —Deep mahogany reddish brown, an odd color but beautiful flower.....	.05	.50	Kirchoffs Violet —Tall beautiful rich velvety dark violet blue15	1.50
Gold —A fine pale golden yellow; one of the best yellows10	1.20	King of Oranges (Prim.) —Large shown primula of intense deep orange saffron color. Deeper and finer than Alice Tiplady.....	.10	1.00
Golden Butterfly (Prim.) —Light yellow of butterfly type05	.50	Kundred's Wild Rose —Tall strong plant with many large intensely ruffled flowers open at one time. Color beautiful wild rose pink with lavender tinted throat of deeper lavender color....	.15	1.50
Golden Measure —Straw yellow, lower petals suffused amber yellow, the largest, tallest and best yellow.....	.10	1.00	Lacinatus — (Kundred's) — Dainty light geranium pink, narrow pointed petals05	.50
Golden Frills —Large open flower, deep rich daffodil yellow with slight pink lines on lower petals. Very choice ruffled10	1.00	Lavender Bride —One of the finest lavenders20	2.00
Golden Swallow (Prim.) —Ruffled yellow, an excellent primula05	.50	Le Marshall Foch —Glistening white suffused cameo pink, reversed suffused light rosaline pink05	.50
Henry C. Goehle —Large open creamy white flowers with beautiful red blotch; very fine10	1.50	La Beaute —One of the most beautiful whites, of fine formation35	
Imperator —Creamy buds, opening white, flowers enormous and plant large and robust.....	.25	2.50	Lillian —Tall, fine white with light pink pencillings over all petals and deep rose pink blotches on lower petals; large and ruffled flowers10	1.00
Indian Maid —Tall and fine, peach blossom pink with deeper throat, very choice07	.70	Lily White —Creamy white shading to cream throat with slight magenta markings deep to center.....	.08	.80
Isis —Intense scarlet, strong grower, fine floescence, very artistic10	1.00	Majestic —Fine light pink20	2.00
Jacob Van Biejeren —New variety from Holland of a violet self color, tall and fine15	1.50	Marshal Foch —Kundred's—Giant flowers of finest salmon pink, fine exhibition flower05	.50
Jennie Lind —Pink with yellow throat.....	.15	1.50			
Joe Coleman —A large vigorous rich red, fine spike, excellent all round variety10	1.00			

	Each	Dozen		Each	Dozen
Marie Kundred —A wonderful pure white with faint pink line in center of lower petals05	.50	Phaenomen —A beautiful glad. Color a blending of salmon, pink and rich yellow, very good spike with perfectly placed flowers.....	.20	2.00
Midsummer's Dream (Prim.) —The finest and best red primula05	.50	Pantheon —Large massive waxy white on tall strong plants. Lower petals penciled and feathered rose....	.35	3.50
Mme. Mounet Sully —Milk white, throat blotched carmine or primrose yellow ground, blotch very distinct10	1.00	Pink Wonder —La France pink shading to pale throat, lower petals with small purple blotch on pale yellow ground05	.50
Mrs. Dr. Norton —Hermosa pink shading to cameo pink, flaked light pink, one of the best prize winners....	.05	.50	Pompeian Beauty —Very large rose pink flower. Fine large round throat petals opening wide. Throat deep red with white points through central line on lower petals20	2.00
Mrs. F. C. Peters —A beautiful shade of amaranth pink with purplish blotch on throat; one of the finest.....	.07	.70	Purple Glory —Tyran rose suffused amaranth purple, slightly flaked, having dark velvety throat, finest and largest ruffled purple.....	.15	1.50
Mrs. Frank Pendleton —Deep rose pink shading to pale pink throat with bright rose red blotch, large and strong07	.70	Queen of the Night —Fine Fine deep maroon with large black blotch in throat and on lower petals. Very scarce20	2.00
Mrs. H. E. Bothan —Light geranium pink heavily ruffled, flame scarlet center. first class cut flower, one of the best show flowers.....	.10	1.00	Red Velvet —Deep cardinal or blood red, delicately flaked deeper red. Throat lines darker with pure white lines alternating.....	.20	2.00
Mrs. Leon Douglas —Begonia rose striped with flame and brilliant scarlet, one of the largest of flowers on tall spikes15	1.50	Richard Deiner —The famous pink Geranium, pink the best of its color.....	.10	1.00
Mrs. W. H. Richardson —One of the finest deep dark reds with fine dark blotch on lower petals and throat.....	.15	1.50	Red Fire —Intense fiery red....	.10	1.00
Myra (Prim.)—A giant flowered primulinus hybrid, deep salmon pink over yellow ground, yellow throat with pink lines. Tall, slender stems and very showy05	.50	Rev. Ewbank —Good porcelain blue; easy to grow.....	.10	1.00
Nancy Hanks —Large rich apricot with grenadine tongue. very fine15	1.50	Romance —Large salmon orange, rose. red and yellow throat. Wine blue bordered petals very showy....	.05	.50
Orange Glory —Rich orange color, lighter in the throat, ruffled and strong grower..	.10	1.00	Royal Purple —Large bloom of the richest violet purple, slightly red cast. Most beautiful one of its color. Strong plants, tall, slender spikes15	1.50
Peach Rose —Extra choice of deepest rose pink, the finest of pinks, large and tall10	1.00	Sans Pareil —Fine apricot pink with white throat.....	.10	1.00
Persia —One of the darkest of reds. Very attractive color15	1.50	Seabrook Gem —Very fine pink10	1.00

	Each	Dozen		Each	Dozen
Sulphur Frills —Fine heavily ruffled light cream or sulphur shade.....	.05	.50	colored, large flowers and many open at a time.....	.15	1.50
Snow Flake —A fine large pure white without any markings10	1.00	Wonderful — Gigantic plant, blooms deep rose pink, upper petals much lighter in throat with light bars. Lower petals have large showy blotch within center, bordered white.....	.30	3.00
Sidney Plummer —Soft yellow suffused delicate pink with rich amber tip, fine color; many open at once; slightly ruffled.....	.10	1.00	Zona (Prim.) — Dnep salmo rose color, lower petal a deep rich canary yellow, outer portion shaded lighter with deep rose pink blotches on center lower petals.....	.10	1.00
Sweet Rose — Very massive flowers on tall strong plant. Extra large, purest deep rose pink with beautiful red throat.....	.10	1.00	Gladiolus Collections—My Selection		
Sweeter Seventeen (Prim.) —Large flowers on tall plant. Cleanest clear deep almond pink, throat dainty pastel yellow, lower petals creamy yellow, except the edges....	.20	2.00	100 bulbs, 10 varieties	\$2.00	
Watermelon —Fine watermelon pink30	3.00	100 bulbs, 20 varieties.....	3.00	
White Pigeon —Large pure white, strong grower, one of finest whites.....	.10	1.00	100 bulbs, mixed named ones and seedlings, some very fine.....	2.00	
W. H. Phipps —La France pink overlaid with light rose salmon, center lighter			15 good varieties, all over 10c each	1.00	
			100 bulbs, 15 varieties.....	3.00	
			25 good varieties from 10c to 40c....	2.50	
			Price per 100 on some varieties on request.		

SOME OF OUR LEADERS

A FEW GOOD VARIETIES FINE AS CUT FLOWERS AND THAT BLOOM ALL SEASON

Alex Waldie.....	\$0.50	Jersey Beauty	\$0.50
Amun Ra.....	0.50	Madiladja	0.50
Couronne D'Or.....	0.50	Mr. Crowley.....	0.50
Chas. Stratton	0.50	Marcella	0.40
Champagne	0.50	Mrs. Salbach	0..0
Earl Williams.....	0.75	Mrs. John Scheepers.....	0.50
Frau Seth Scheif.....	0.50	Nancy Helen	0.50
Glorie de Verdun.....	0.50	Romance	0.50
Gloriana	0.50	Rosa Nell	0.50
Insulinde	0.50	The Grizzley	0.50
20 varieties, one of each, for.....			6.00

CACTUS DAHLIAS AND HYBRID CACTUS

A. C. Lawrence.....	\$0.50	Hoffnung	\$0.50
Chas. Sherbrook.....	0.50	Jersey's Radiant	0.50
Caruso	0.50	U. S. A.	0.50
Emma Marie	0.50	California Superba	0.50
Galatea	0.50	Javender Beauty.....	0.50
Gladys Sherwood.....	0.50	King Solomon.....	0.50
Laurine	0.50	Red Chief.....	0.50
14 varieties, one of each, for.....			4.00

Address all Orders to

A. T. EDISON, R. D. No. 2

GRAND RAPIDS, MICH.

